

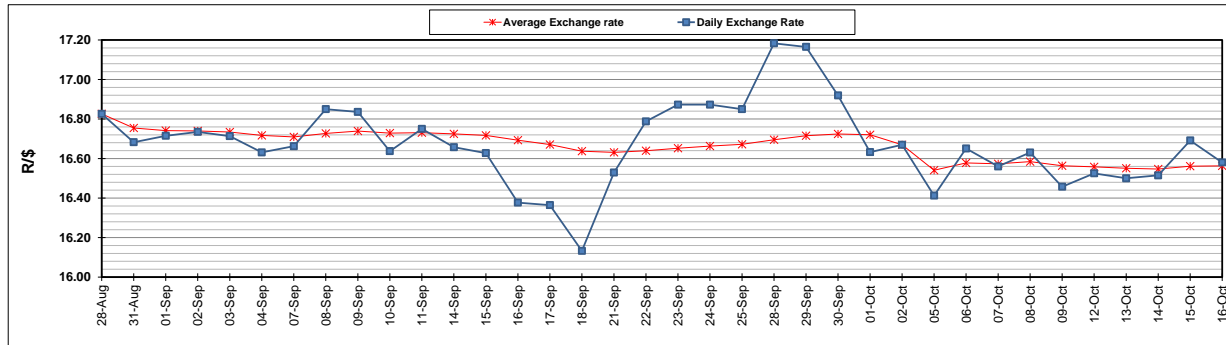
	PETROL 95 ULP	PETROL 93 ULP & LRP	DIESEL 0.05%	DIESEL 0.005%	ILL. PAR.
GAUTENG PUMP PRICE (SA c/l) AS FROM 07/10/2020	1,486.000	1,466.000	-	-	-
WHOLESALE PRICE (SA c/l) AS FROM 07/10/2020	-	-	1,237.560	1,238.960	640.828
SINGLE NATIONAL MAXIMUM RETAIL PRICE	-	-	-	-	798.000
BASIC FUEL PRICE - 16/10/2020 (SA c/l)	517.650	511.651	505.028	507.319	477.914
PRESS RELEASE CONTRIBUTION TO BFP 07/10/2020 - 16/10/2020 (SA c/l)	533.470	523.470	486.630	488.030	436.128
UNIT OVER/(UNDER) RECOVERY - 16/10/2020 (SA c/l)	15.820	11.819	(18.398)	(19.289)	(41.786)
AVERAGE BASIC FUEL PRICE 02/10/2020 - 16/10/2020	526.100	516.432	498.455	500.545	468.542
AVERAGE UNIT OVER/(UNDER) RECOVERY 02/10/2020 - 16/10/2020	16.098	13.311	12.721	12.848	(11.686)

### ANALYSIS MOVEMENT OF AVERAGE OVER/(UNDER) RECOVERY

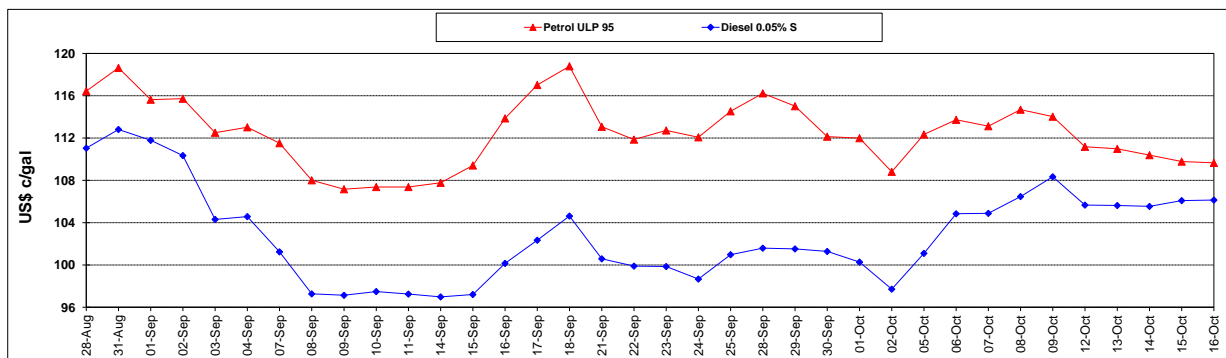
	PETROL 95	PETROL 93	DIESEL 0.05%	DIESEL 0.005%	ILL. PAR.
- MOVEMENT IN INTERNATIONAL PRODUCT PRICES	11.097	8.403	7.983	8.092	(16.140)
- MOVEMENT IN EXCHANGE RATE	5.000	4.908	4.737	4.757	4.453
AVERAGE UNIT OVER/(UNDER) RECOVERY 02/10/2020 - 16/10/2020	16.098	13.311	12.721	12.848	(11.686)

### R/\$ EXCHANGE RATE - (R/\$16.5803 - 16/10/2020)

#### EXCHANGE RATE USED IN BASIC FUEL PRICE



#### INTERNATIONAL PRODUCT PRICES OF BASKET USED IN BASIC FUEL PRICE



#### BASIC FUEL PRICE IN SA CENTS PER LITRE

